

Route 23 Connect Public Comment Map Summary

PID 112768 | U.S. 23 Corridor Study



Highlights

- 572 total comments submitted between November 2022 and January 2023
- Segment 2 (area surrounding Orange Road and SR-750 [Powell Road]) most discussed with 102 comments
- Congestion most discussed theme (168 comments) followed by Safety Concerns (150 comments)

Overall Comment Themes for U.S. 23 Study Area

Congestion

- Major concern south of City of Delaware
- Too many traffic lights/traffic lights too close together
- Too many access points (entrances/exits) to U.S. 23
- Traffic signals do not seem coordinated
- Truck traffic adds to congestion

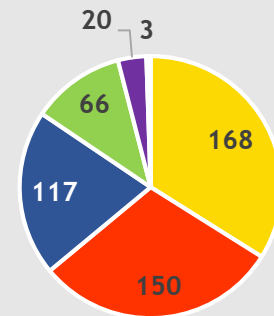
Safety Concerns

- Major safety concerns north of City of Delaware
- Speed limit is too high and not consistent
- Drivers do not follow traffic control devices (right-in/right-out, traffic signals, medians, speed limit)
- Visibility issues
- Dangerous intersections throughout corridor

Improvements Needed

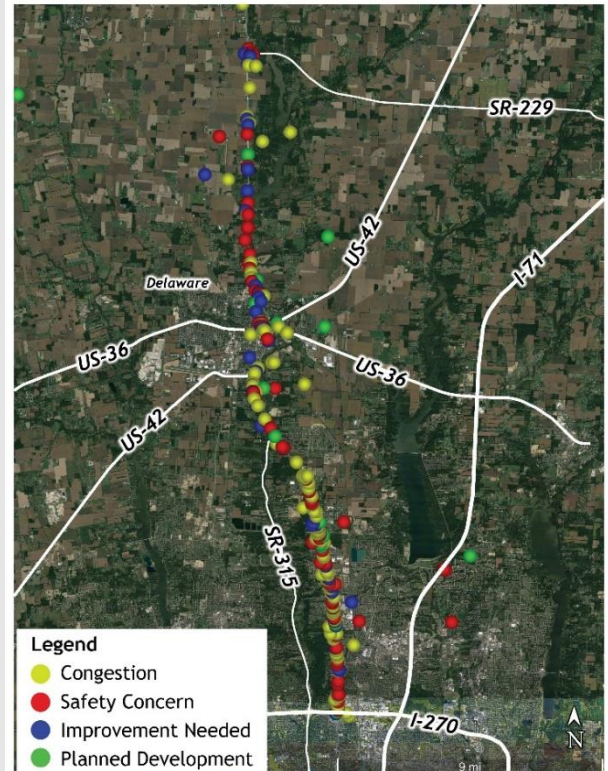
- Access management needed at intersections with U.S. 23 (limit or consolidate access/entry points from side roads to U.S. 23, right-in/right-out, overpass, interchange, remove left turn options, etc.)
- Use of frontage roads
- Potential re-routes or additional connections needed to alleviate U.S. 23 usage/traffic
- Improved traffic signal timing/coordination
- Pedestrian facilities for alternate modes of transportation needed around City of Delaware, trail connections, and park areas

Comment Distribution by Topic



- Congestion
- Safety Concern
- Improvement Needed
- Planned or Proposed Development
- General

Map Pin Overview – Entire Study



Route 23 Connect Public Comment Map Summary

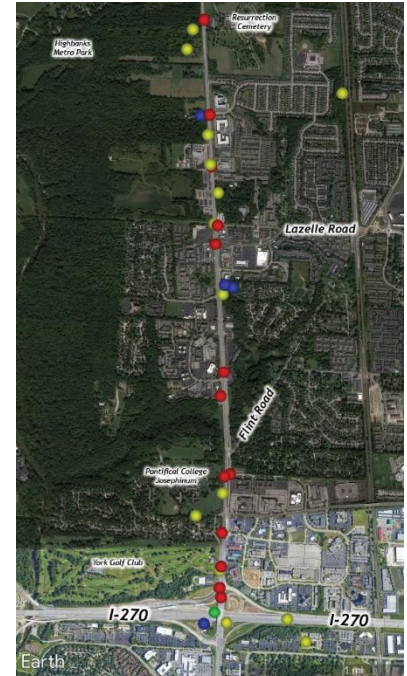
PID 112768 | U.S. 23 Corridor Study



Segment 1: I-270 to Olentangy Meadows Drive (45 Comments)

Top Themes

- **Congestion (Top Theme - 19 comments)**
 - Traffic needs to be directed away from/around U.S. 23/I-270 interchange
 - Too many traffic signals/traffic signals too close together
 - Too many access points (entrances/exits) to U.S. 23, left turn movements should be limited
- **Safety Concerns (16 comments)**
 - Lane/exit signage for southbound U.S. 23 towards I-270 is insufficient and diagonal arrows are confusing, causes people to switch lanes at the last minute, crashes
 - Traffic signal so close to I-270 off-ramp causes rear end crashes
- **Improvements Needed (8 comments)**
 - Better signage/pavement painting is needed on U.S. 23 southbound at I-270/SR 315/U.S. 23 interchange area
 - Add ramp directly from U.S. 23 northbound to I-270 E to avoid traffic from SR 315
 - Pedestrian improvements/facilities needed in area



Legend

- Congestion
- Safety Concern
- Improvement Needed
- Planned Development

Route 23 Connect Public Comment Map Summary

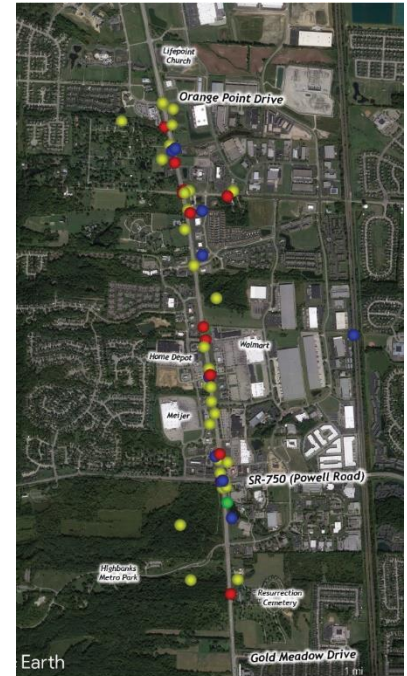
PID 112768 | U.S. 23 Corridor Study



Segment 2: Green Meadows Drive to Orange Road (102 Comments)

Top Themes

- **Congestion (Top Theme - 44 comments)**
 - Heavy congestion during peak hours
 - Too many traffic signals/traffic signals too close together
 - Too many access points (entrances/exits) to U.S. 23
 - Frontage roads/thru traffic bypass lanes needed
 - Traffic signal timing needs to be improved
- **Safety Concerns (24 comments)**
 - Lots of people running red lights
 - Speed limit too high
 - Light cycles too short, not enough buffer time between light changes
 - U.S. 23 roadway curvature at Orange Road causes visibility issues
- **Improvements Needed (20 comments)**
 - Frontage roads
 - Limit access/entry points to U.S. 23
 - Pedestrian accommodations



Legend

- Congestion
- Safety Concern
- Improvement Needed
- Planned Development

Route 23 Connect Public Comment Map Summary

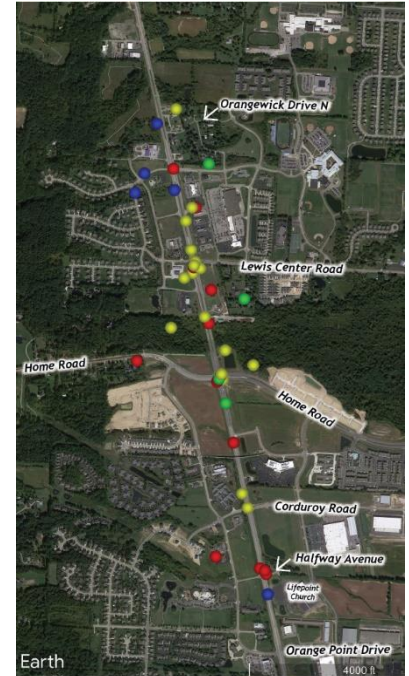
PID 112768 | U.S. 23 Corridor Study



Segment 3: Orange Point Drive to Olentangy Crossing (62 Comments)

Top Themes

- **Congestion (Top Theme - 25 comments)**
 - Heavy congestion during peak hours near Lewis Center Road and Home Road
 - Too many traffic signals/traffic signals too close together
 - Too many access points (entrances/exits) to U.S. 23
 - Semi-trucks slow traffic
- **Safety Concerns (16 comments)**
 - Too many drivers running red lights
 - Speed limit too high
 - Right-in/right-out not followed at Halfway Avenue, need to build up median to enforce
- **Improvements Needed (9 comments)**
 - Frontage roads
 - Limit access/entry points to U.S. 23
 - Pedestrian accommodations needed



Legend

- Congestion
- Safety Concern
- Improvement Needed
- Planned Development

Route 23 Connect Public Comment Map Summary

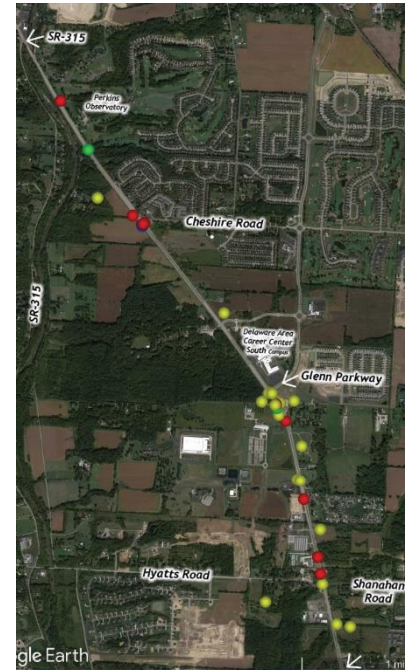
PID 112768 | U.S. 23 Corridor Study



Segment 4: Hyatts Road/Shanahan Road to Pollock Road (54 Comments)

Top Themes

- **Congestion (Top Theme - 20 comments)**
 - Heavy congestion at Glenn Parkway
 - Heavy congestion during peak hours
 - Too many traffic signals/traffic signals too close together
- **Safety Concern (12 comments)**
 - Drivers on U.S. 23 run red lights at Cheshire Road intersection creating very dangerous situation
 - Pollock Road intersection is dangerous (should have limited access/intersection improvements)
- **Improvements Needed (9 comments)**
 - Frontage roads
 - Light for left turn lane onto U.S. 23 southbound at Glenn Parkway needs to be longer, or additional left turn lane needed to allow more cars



Legend

- Congestion
- Safety Concern
- Improvement Needed
- Planned Development

Route 23 Connect Public Comment Map Summary

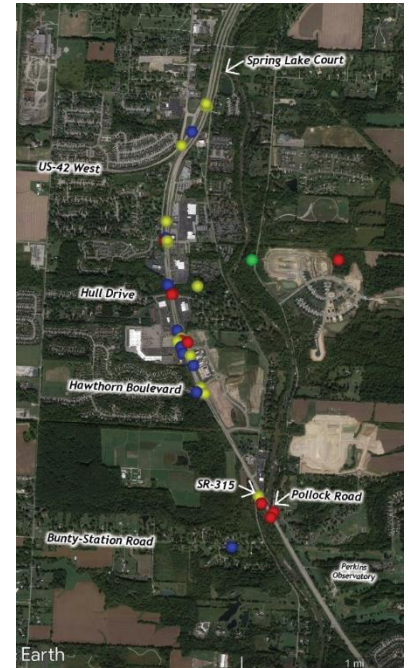
PID 112768 | U.S. 23 Corridor Study



Segment 5: SR 315 to U.S. 42 (45 Comments)

Top Themes

- **Congestion (Top Theme - 17 comments)**
 - Too many traffic signals/traffic signals too close together
 - Traffic signals do not seem coordinated
- Improvements Needed (13 comments)
 - Limit access/entry points to U.S. 23
 - Upgrade/re-work U.S. 42 and U.S. 23 intersection area
 - Frontage roads
- Safety Concerns (12 comments)
 - Left turn from Hull Drive onto U.S. 23 south is dangerous



Legend

- Congestion
- Safety Concern
- Improvement Needed
- Planned Development

Route 23 Connect Public Comment Map Summary

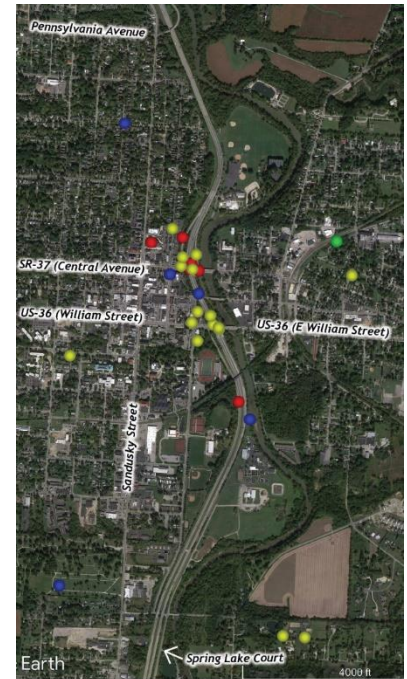
PID 112768 | U.S. 23 Corridor Study



City of Delaware: Between Segments 5 and 6 (49 Comments)

Top Themes

- **Congestion (Top Theme - 21 comments)**
 - U.S. 36 (William Street) area has severe congestion
 - SR 37 (Central Avenue) area has severe congestion
- Improvements Needed (15 comments)
 - Northbound on-ramp connection at SR 37 (William Street) and U.S. 23
 - Lighting and beautification needed under overpass to help connect downtown with the riverfront district
- Safety Concern (7 comments)
 - Prioritize and improve pedestrian and bike facilities at U.S. 23 and SR 37 (Central Avenue)



Legend

- Congestion
- Safety Concern
- Improvement Needed
- Planned Development

Route 23 Connect Public Comment Map Summary

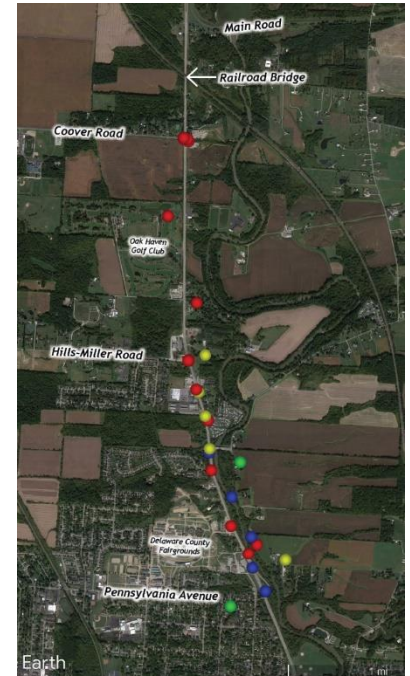
PID 112768 | U.S. 23 Corridor Study



Segment 6: Pennsylvania Avenue to Coover Road (59 Comments)

Top Themes

- **Safety Concerns (Top Theme - 27 comments)**
 - Intersection of U.S. 23 and Coover Road
 - Overgrown trees cause poor visibility on Coover road looking at southbound U.S. 23 traffic
 - Heavy usage by Buckeye Valley students and busses at peak times, new drivers navigating intersection
 - Intersection of U.S. 23 and Hills-Miller Road is dangerous
 - Too many access points (entrances/exits) to U.S. 23
- **Congestion (10 comments)**
 - Too many traffic signals/traffic signals too close together
 - Access out of Shroyer's Mobile Homes to U.S. 23 southbound difficult
- **Improvements Needed (13 comments)**
 - Frontage roads
 - Limit access/entry points to U.S. 23 and across U.S. 23
 - Pedestrian and cyclist accommodations needed to connect to nearby parks and trails



Legend

- Congestion
- Improvement Needed
- Safety Concern
- Planned Development

Route 23 Connect Public Comment Map Summary

PID 112768 | U.S. 23 Corridor Study



Segment 7: Main Road to SR 229 (65 Comments)

Top Themes

- **Safety Concerns (Top Theme - 36 comments)**
 - U.S. 23 and SR 229 is dangerous
 - Left turns from Main Road to southbound on U.S. 23 are dangerous, railroad bridge causes visibility issues
 - Turning right out of Delaware State Park to merge onto northbound U.S. 23 is dangerous
- **Improvements Needed (15 comments)**
 - Interchange needed at U.S. 23 and SR 229
 - Delaware State Park entrance intersection needs improvement
 - Traffic signal timing/coordination
- **Congestion (12 comments)**
 - Too many traffic signals/traffic signals too close together
 - Traffic signals do not seem to be coordinated
 - Test pavement area should be opened to traffic to ease congestion



Legend

- Congestion
- Safety Concern
- Improvement Needed
- Planned Development